

Ceiling to be either a 4mm Silver Mirror or a 6mm Black Mirror.

Pine Frame Clad in MDF Board (SUPAWOOD). To be finished in a high gloss black paint.

Brushed steel Lettering

White Glass Pendant Light (See Plan for position)

The Plantation Shutters, to be in a dark timber

Floor Board to be MDF Board (SUPAWOOD). To be finished in a high gloss black Epoxy paint, finished with a resin sealant.

High gloss White Cornice to form junction between ceiling and wall

White Hinged Window Shutters to be Revealed. Fixed. Black and white Image to form Backdrop to Shutter.

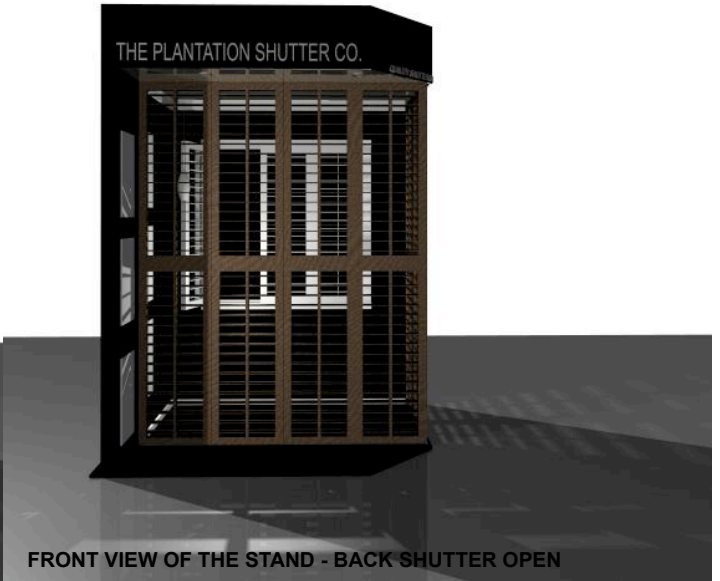
High gloss White Skirting to form junction between floor and wall

4 Aluminium Downlights to light up stand, together with pendant light

The Plantation Shutter Co. Storyboards to be similar to the Rondebosch Building centre display. Information on the outside, images on the inside.

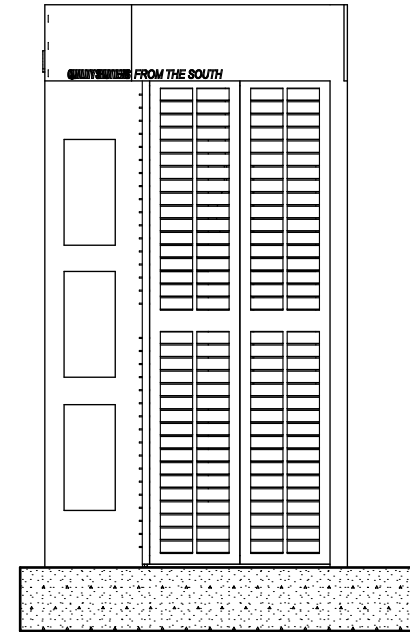
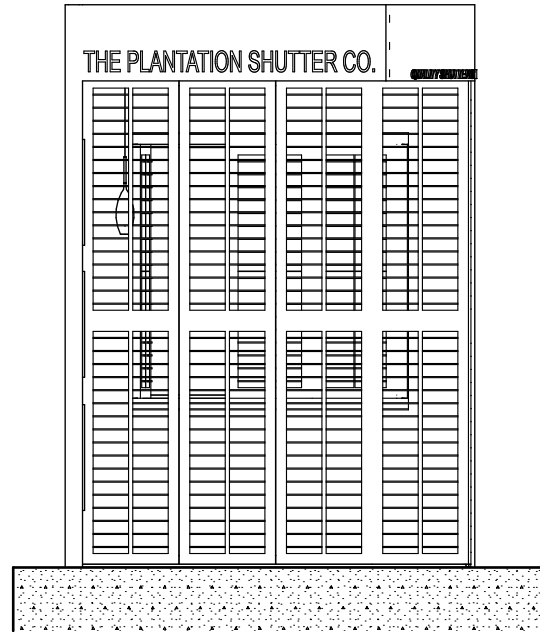
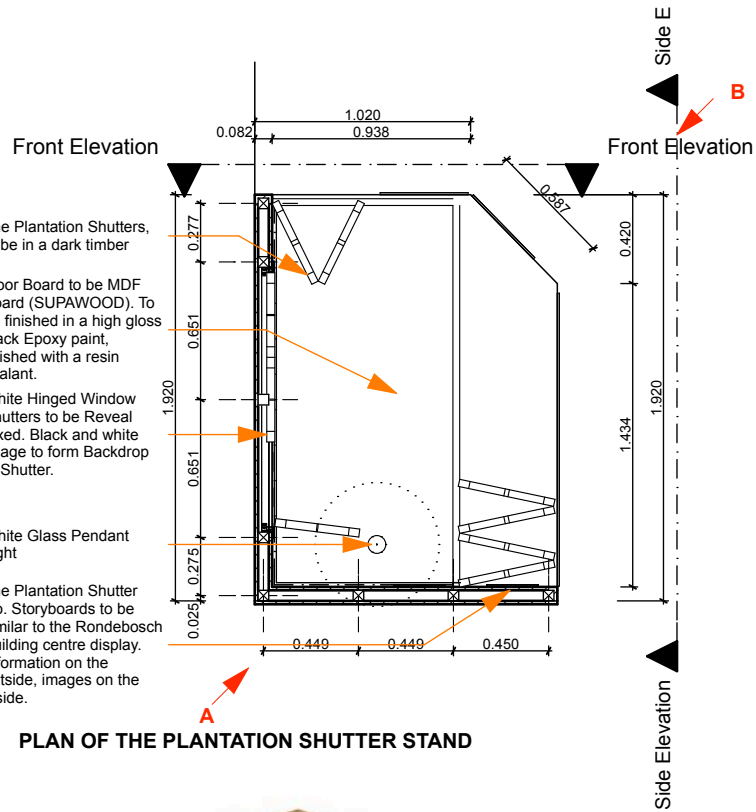
CORNER VIEW OF THE STAND - SHUTTERS OPEN

CORNER VIEW OF THE STAND - SHUTTERS CLOSED



FRONT VIEW OF THE STAND - SHUTTERS CLOSED, INCLUDING BACK SHUTTER

FRONT VIEW OF THE STAND - BACK SHUTTER OPEN



Ceiling Structure has to be able to span stand space without support and needs to be able to carry the weight of the mirror. Have proposed a tie beam. It might be structurally over designed, but a ceiling contractor will have to advise regarding the weight of the mirror.

Frame is to be standard timber sizes and to be clad in MDF Board (SUPAWOOD). To be finished in a high gloss black paint.

Floor Board to be MDF Board (SUPAWOOD). To be finished in a high gloss black Epoxy paint, finished with a resin sealant.

